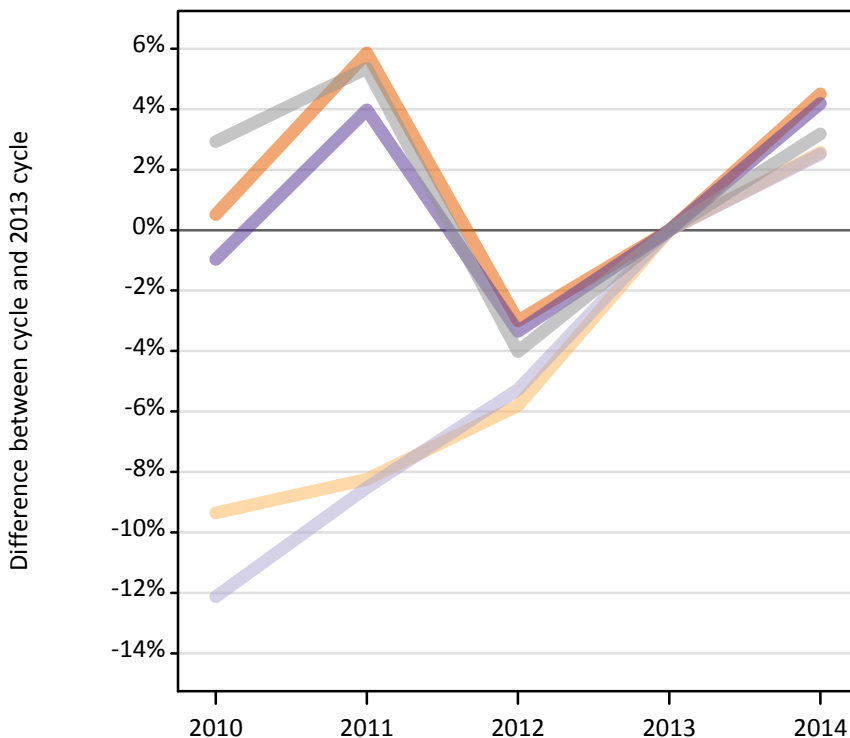
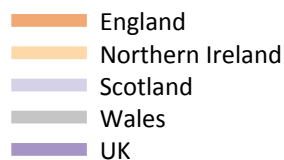


Applications by country and type of institution at the 15 January deadline

D.5.1 Applications by domicile and country of institution : All domiciles

Difference between cycle and 2013 cycle



D.5.2 Applications by domicile and country of institution : All domiciles

Domicile of applicant and country of institution		2010	2011	2012	2013	2014
All domiciles	England	2,046,590	2,155,350	1,975,000	2,036,020	2,127,670
	Northern Ireland	53,590	54,250	55,690	59,120	60,640
	Scotland	228,850	238,260	246,680	260,440	266,990
	Wales	97,800	100,100	91,200	95,020	98,040
	UK	2,426,830	2,547,960	2,368,570	2,450,590	2,553,340

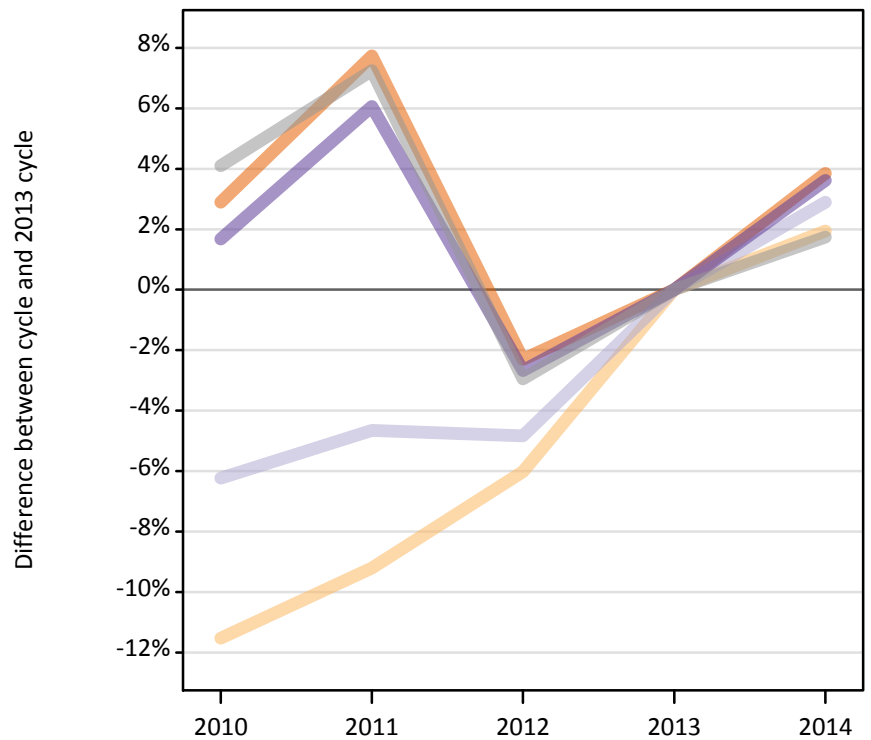
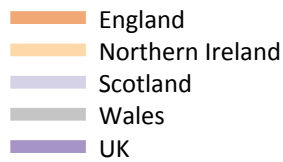
D.5.3 Applications by domicile and country of institution : All domiciles

Difference between cycle and 2013 cycle

Domicile of applicant and country of institution		2010	2011	2012	2013	2014
All domiciles	England	1%	6%	-3%	0%	5%
	Northern Ireland	-9%	-8%	-6%	0%	3%
	Scotland	-12%	-9%	-5%	0%	3%
	Wales	3%	5%	-4%	0%	3%
	UK	-1%	4%	-3%	0%	4%

D.5.4 Applications by domicile and country of institution : UK

Difference between cycle and 2013 cycle



D.5.5 Applications by domicile and country of institution : UK

Domicile of applicant and country of institution		2010	2011	2012	2013	2014
UK	England	1,785,810	1,869,860	1,695,680	1,735,650	1,802,440
	Northern Ireland	48,760	50,040	51,800	55,120	56,190
	Scotland	188,420	191,580	191,230	200,940	206,760
	Wales	89,400	92,100	83,350	85,880	87,380
	UK	2,112,400	2,203,580	2,022,060	2,077,580	2,152,760

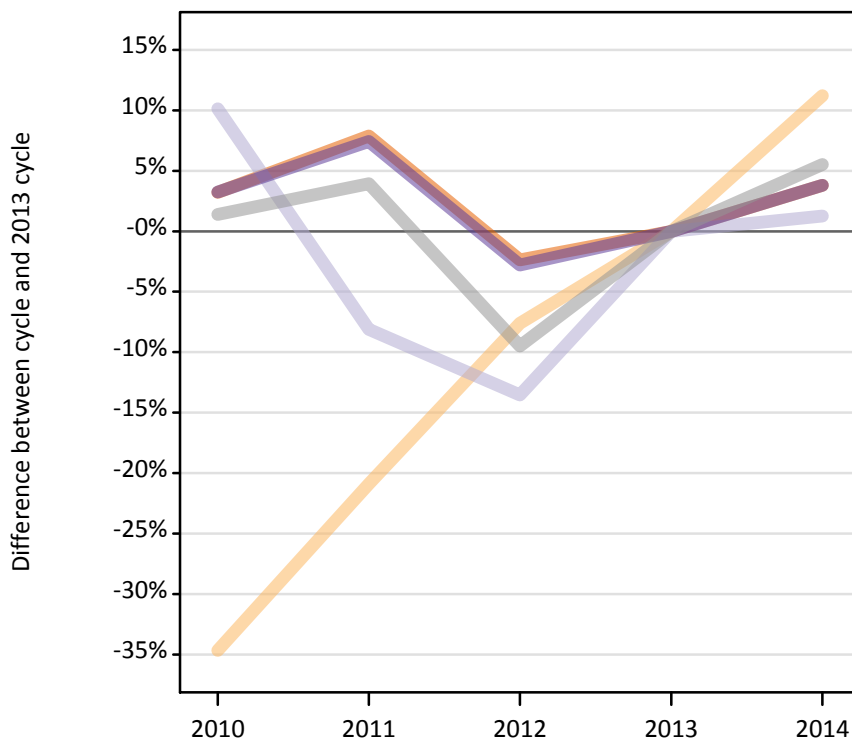
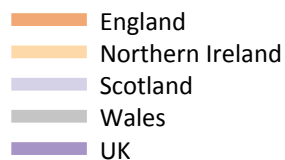
D.5.6 Applications by domicile and country of institution : UK

Difference between cycle and 2013 cycle

Domicile of applicant and country of institution		2010	2011	2012	2013	2014
UK	England	3%	8%	-2%	0%	4%
	Northern Ireland	-12%	-9%	-6%	0%	2%
	Scotland	-6%	-5%	-5%	0%	3%
	Wales	4%	7%	-3%	0%	2%
	UK	2%	6%	-3%	0%	4%

D.5.7 Applications by domicile and country of institution : England

Difference between cycle and 2013 cycle



D.5.8 Applications by domicile and country of institution : England

Domicile of applicant and country of institution		2010	2011	2012	2013	2014
England	England	1,708,350	1,785,800	1,616,210	1,655,250	1,718,100
	Northern Ireland	1,530	1,850	2,160	2,340	2,600
	Scotland	38,750	32,330	30,420	35,190	35,630
	Wales	47,370	48,560	42,290	46,720	49,300
	UK	1,796,000	1,868,540	1,691,080	1,739,490	1,805,630

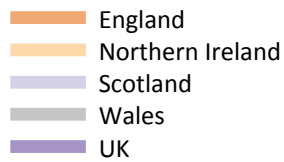
D.5.9 Applications by domicile and country of institution : England

Difference between cycle and 2013 cycle

Domicile of applicant and country of institution		2010	2011	2012	2013	2014
England	England	3%	8%	-2%	0%	4%
	Northern Ireland	-35%	-21%	-8%	0%	11%
	Scotland	10%	-8%	-14%	0%	1%
	Wales	1%	4%	-9%	0%	6%
	UK	3%	7%	-3%	0%	4%

D.5.10 Applications by domicile and country of institution : Northern Ireland

Difference between cycle and 2013 cycle



D.5.11 Applications by domicile and country of institution : Northern Ireland

Domicile of applicant and country of institution		2010	2011	2012	2013	2014
Northern Ireland	England	24,010	28,000	23,870	24,820	25,260
	Northern Ireland	46,970	47,930	49,360	52,510	53,360
	Scotland	10,060	10,160	8,330	9,900	8,600
	Wales	1,120	1,270	1,060	1,270	1,160
	UK	82,160	87,360	82,610	88,500	88,370

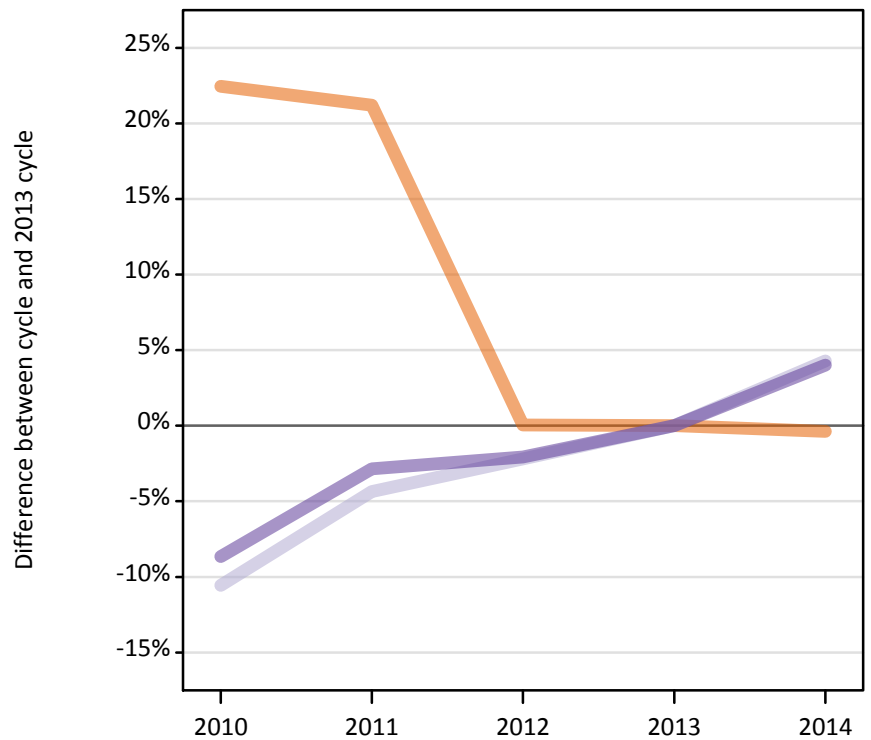
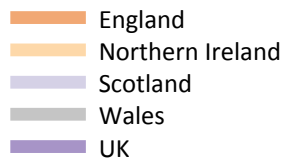
D.5.12 Applications by domicile and country of institution : Northern Ireland

Difference between cycle and 2013 cycle

Domicile of applicant and country of institution		2010	2011	2012	2013	2014
Northern Ireland	England	-3%	13%	-4%	0%	2%
	Northern Ireland	-11%	-9%	-6%	0%	2%
	Scotland	2%	3%	-16%	0%	-13%
	Wales	-12%	0%	-17%	0%	-9%
	UK	-7%	-1%	-7%	0%	-0%

D.5.13 Applications by domicile and country of institution : Scotland

Difference between cycle and 2013 cycle



D.5.14 Applications by domicile and country of institution : Scotland

Domicile of applicant and country of institution		2010	2011	2012	2013	2014
Scotland	England	10,950	10,840	8,950	8,940	8,910
	Northern Ireland	190	190	190	190	140
	Scotland	138,490	148,100	151,430	154,830	161,480
	Wales	350	350	230	210	220
	UK	149,980	159,480	160,790	164,170	170,750

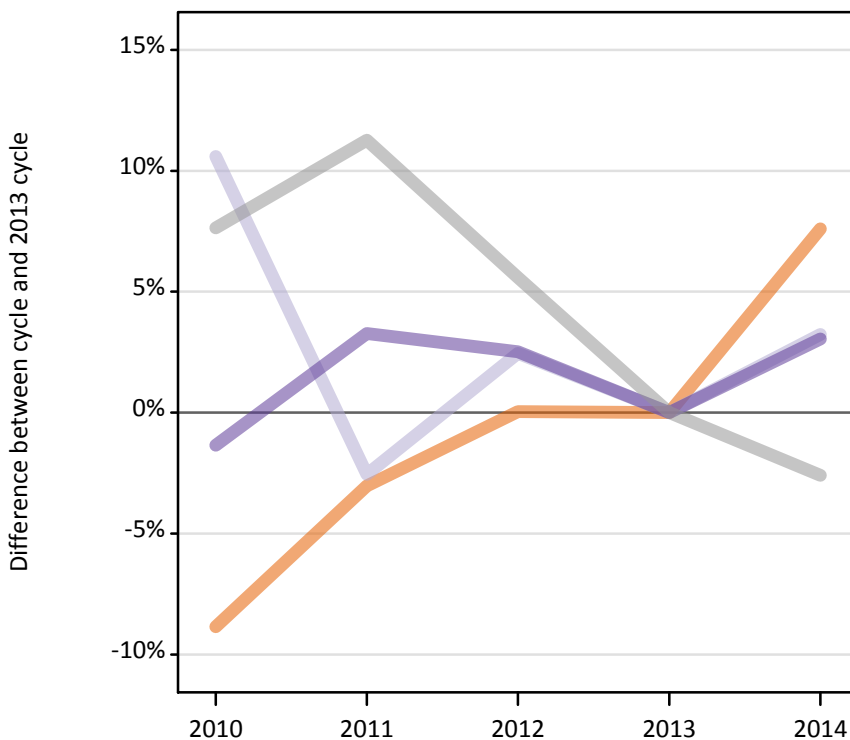
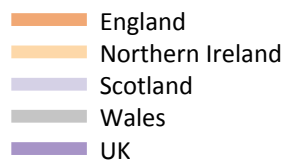
D.5.15 Applications by domicile and country of institution : Scotland

Difference between cycle and 2013 cycle

Domicile of applicant and country of institution		2010	2011	2012	2013	2014
Scotland	England	22%	21%	0%	0%	-0%
	Northern Ireland	2%	4%	3%	0%	-25%
	Scotland	-11%	-4%	-2%	0%	4%
	Wales	67%	65%	6%	0%	4%
	UK	-9%	-3%	-2%	0%	4%

D.5.16 Applications by domicile and country of institution : Wales

Difference between cycle and 2013 cycle



D.5.17 Applications by domicile and country of institution : Wales

Domicile of applicant and country of institution		2010	2011	2012	2013	2014
Wales	England	42,510	45,220	46,660	46,640	50,180
	Northern Ireland	70	70	90	90	90
	Scotland	1,130	990	1,050	1,020	1,050
	Wales	40,560	41,920	39,780	37,680	36,700
	UK	84,270	88,210	87,580	85,420	88,020

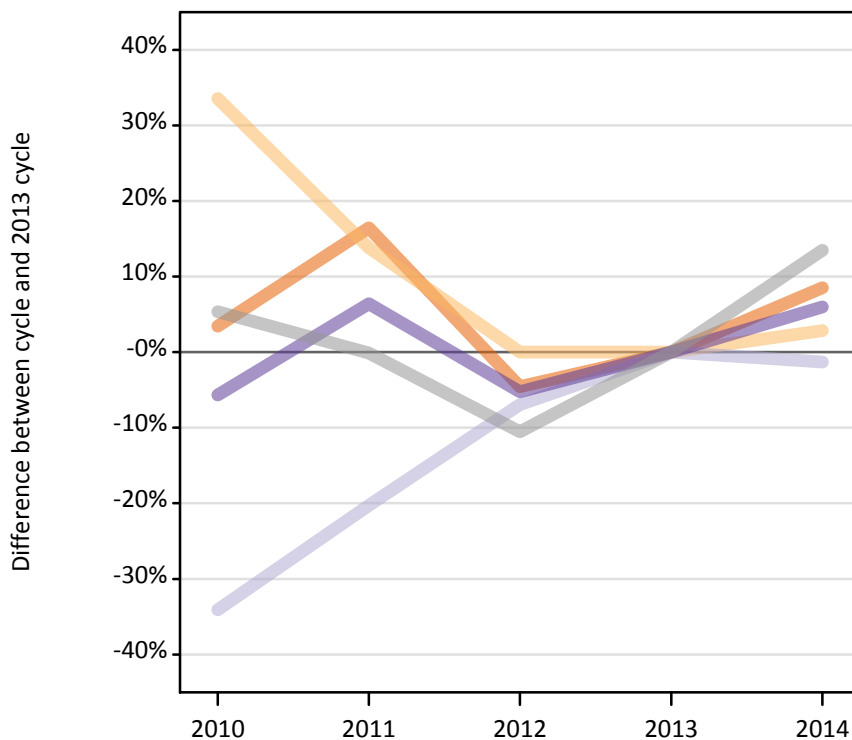
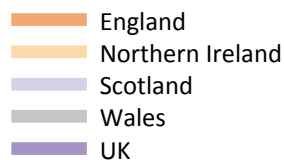
D.5.18 Applications by domicile and country of institution : Wales

Difference between cycle and 2013 cycle

Domicile of applicant and country of institution		2010	2011	2012	2013	2014
Wales	England	-9%	-3%	0%	0%	8%
	Northern Ireland	-17%	-18%	5%	0%	3%
	Scotland	11%	-3%	2%	0%	3%
	Wales	8%	11%	6%	0%	-3%
	UK	-1%	3%	3%	0%	3%

D.5.19 Applications by domicile and country of institution : EU (excluding UK)

Difference between cycle and 2013 cycle



D.5.20 Applications by domicile and country of institution : EU (excluding UK)

Domicile of applicant and country of institution		2010	2011	2012	2013	2014
EU (excluding UK)	England	119,790	134,810	110,520	115,790	125,650
	Northern Ireland	4,380	3,730	3,280	3,280	3,370
	Scotland	28,570	34,560	40,330	43,340	42,770
	Wales	4,440	4,200	3,770	4,210	4,780
	UK	157,170	177,300	157,890	166,620	176,560

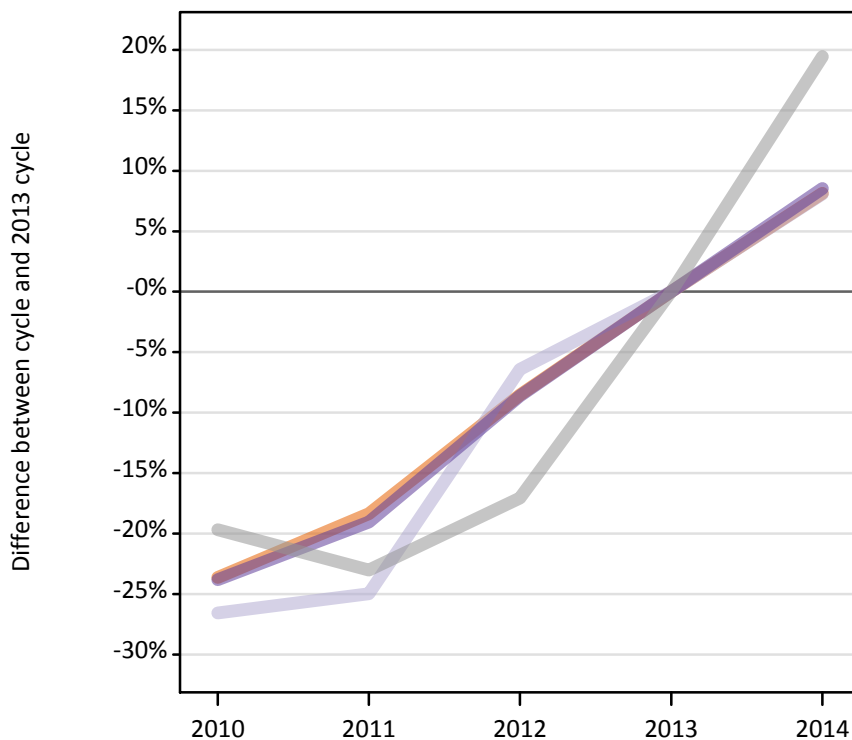
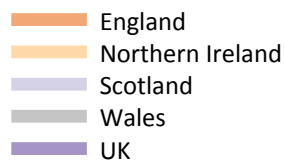
D.5.21 Applications by domicile and country of institution : EU (excluding UK)

Difference between cycle and 2013 cycle

Domicile of applicant and country of institution		2010	2011	2012	2013	2014
EU (excluding UK)	England	3%	16%	-5%	0%	9%
	Northern Ireland	34%	14%	0%	0%	3%
	Scotland	-34%	-20%	-7%	0%	-1%
	Wales	5%	-0%	-11%	0%	13%
	UK	-6%	6%	-5%	0%	6%

D.5.22 Applications by domicile and country of institution : Not EU

Difference between cycle and 2013 cycle



D.5.23 Applications by domicile and country of institution : Not EU

Domicile of applicant and country of institution		2010	2011	2012	2013	2014
Not EU	England	140,990	150,680	168,800	184,580	199,580
	Northern Ireland	450	480	610	730	1,080
	Scotland	11,870	12,120	15,120	16,160	17,460
	Wales	3,960	3,790	4,090	4,930	5,890
	UK	157,260	167,070	188,620	206,390	224,010

D.5.24 Applications by domicile and country of institution : Not EU

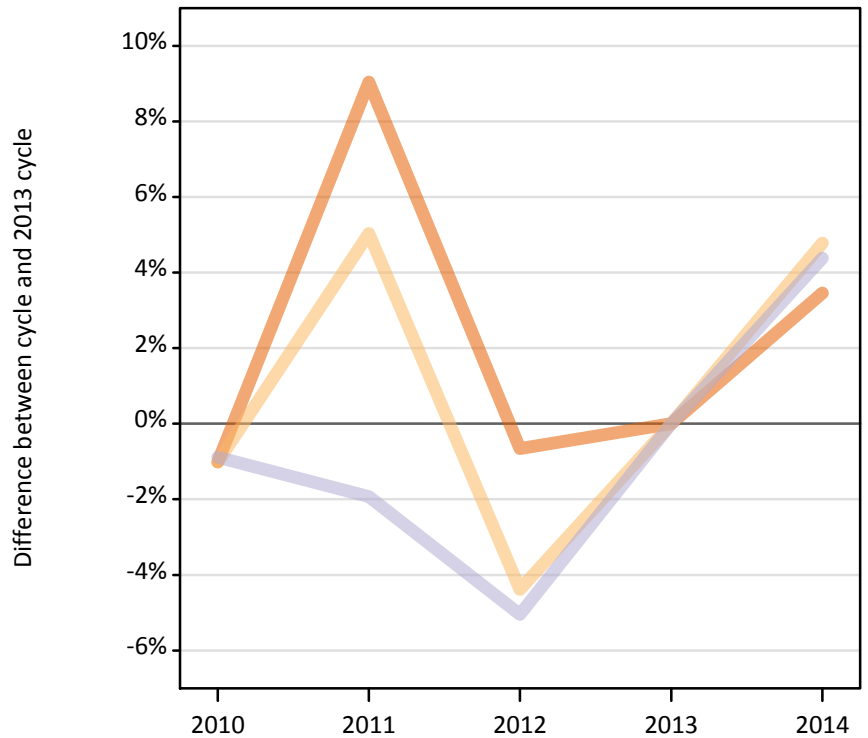
Difference between cycle and 2013 cycle

Domicile of applicant and country of institution		2010	2011	2012	2013	2014
Not EU	England	-24%	-18%	-9%	0%	8%
	Northern Ireland	-38%	-34%	-16%	0%	49%
	Scotland	-27%	-25%	-6%	0%	8%
	Wales	-20%	-23%	-17%	0%	19%
	UK	-24%	-19%	-9%	0%	9%

D.5.25 Applications by domicile and tariff group of institution : All domiciles

Difference between cycle and 2013 cycle

- 1. Lower tariff
- 2. Medium tariff
- 3. Higher tariff



D.5.26 Applications by domicile and tariff group of institution : All domiciles

Domicile of applicant and tariff group of institution		2010	2011	2012	2013	2014
All domiciles	1. Lower tariff	825,880	909,770	828,870	834,350	863,180
	2. Medium tariff	755,420	801,540	729,650	763,120	799,630
	3. Higher tariff	845,540	836,650	810,050	853,120	890,530
	All	2,426,830	2,547,960	2,368,570	2,450,590	2,553,340

D.5.27 Applications by domicile and tariff group of institution : All domiciles

Difference between cycle and 2013 cycle

Domicile of applicant and tariff group of institution		2010	2011	2012	2013	2014
All domiciles	1. Lower tariff	-1%	9%	-1%	0%	3%
	2. Medium tariff	-1%	5%	-4%	0%	5%
	3. Higher tariff	-1%	-2%	-5%	0%	4%
	All	-1%	4%	-3%	0%	4%

D.5.28 Applications by domicile and tariff group of institution : UK

Difference between cycle and 2013 cycle

- 1. Lower tariff
- 2. Medium tariff
- 3. Higher tariff



D.5.29 Applications by domicile and tariff group of institution : UK

Domicile of applicant and tariff group of institution		2010	2011	2012	2013	2014
UK	1. Lower tariff	769,280	846,410	772,920	774,580	799,070
	2. Medium tariff	674,410	710,670	640,270	665,650	695,820
	3. Higher tariff	668,710	646,510	608,880	637,360	657,880
	All	2,112,400	2,203,580	2,022,060	2,077,580	2,152,760

D.5.30 Applications by domicile and tariff group of institution : UK

Difference between cycle and 2013 cycle

Domicile of applicant and tariff group of institution		2010	2011	2012	2013	2014
UK	1. Lower tariff	-1%	9%	-0%	0%	3%
	2. Medium tariff	1%	7%	-4%	0%	5%
	3. Higher tariff	5%	1%	-4%	0%	3%
	All	2%	6%	-3%	0%	4%

D.5.31 Applications by domicile and tariff group of institution : England

Difference between cycle and 2013 cycle

- 1. Lower tariff
- 2. Medium tariff
- 3. Higher tariff



D.5.32 Applications by domicile and tariff group of institution : England

Domicile of applicant and tariff group of institution		2010	2011	2012	2013	2014
England	1. Lower tariff	694,220	764,850	692,820	697,330	720,040
	2. Medium tariff	558,310	581,890	511,210	529,820	552,740
	3. Higher tariff	543,470	521,800	487,060	512,340	532,850
	All	1,796,000	1,868,540	1,691,080	1,739,490	1,805,630

D.5.33 Applications by domicile and tariff group of institution : England

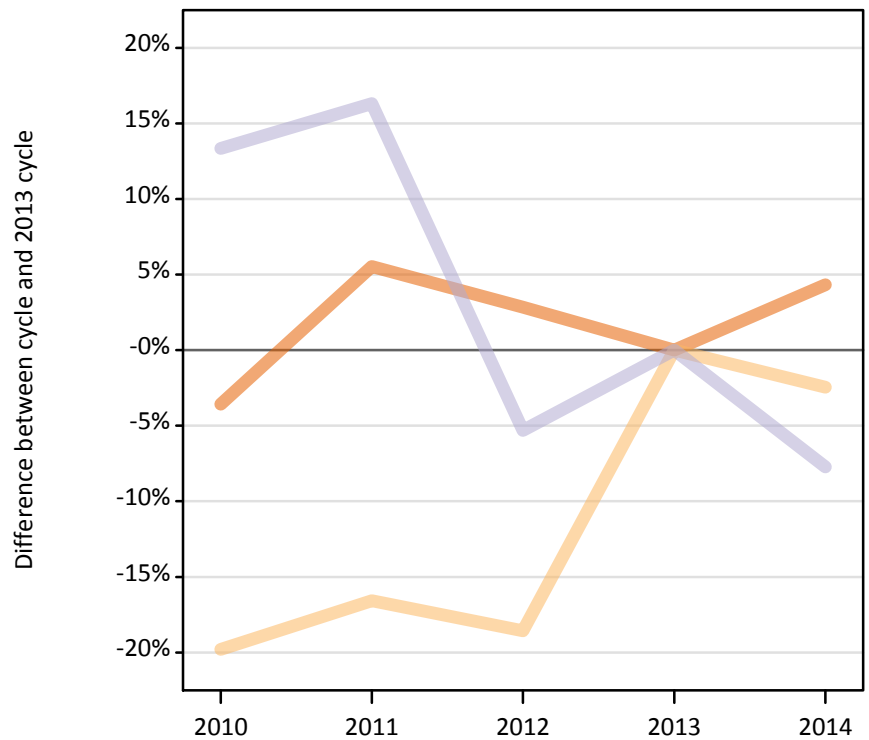
Difference between cycle and 2013 cycle

Domicile of applicant and tariff group of institution		2010	2011	2012	2013	2014
England	1. Lower tariff	-0%	10%	-1%	0%	3%
	2. Medium tariff	5%	10%	-4%	0%	4%
	3. Higher tariff	6%	2%	-5%	0%	4%
	All	3%	7%	-3%	0%	4%

D.5.34 Applications by domicile and tariff group of institution : Northern Ireland

Difference between cycle and 2013 cycle

- 1. Lower tariff
- 2. Medium tariff
- 3. Higher tariff



D.5.35 Applications by domicile and tariff group of institution : Northern Ireland

Domicile of applicant and tariff group of institution		2010	2011	2012	2013	2014
Northern Ireland	1. Lower tariff	39,250	42,950	41,860	40,700	42,470
	2. Medium tariff	27,280	28,370	27,700	34,010	33,180
	3. Higher tariff	15,630	16,040	13,060	13,790	12,730
	All	82,160	87,360	82,610	88,500	88,370

D.5.36 Applications by domicile and tariff group of institution : Northern Ireland

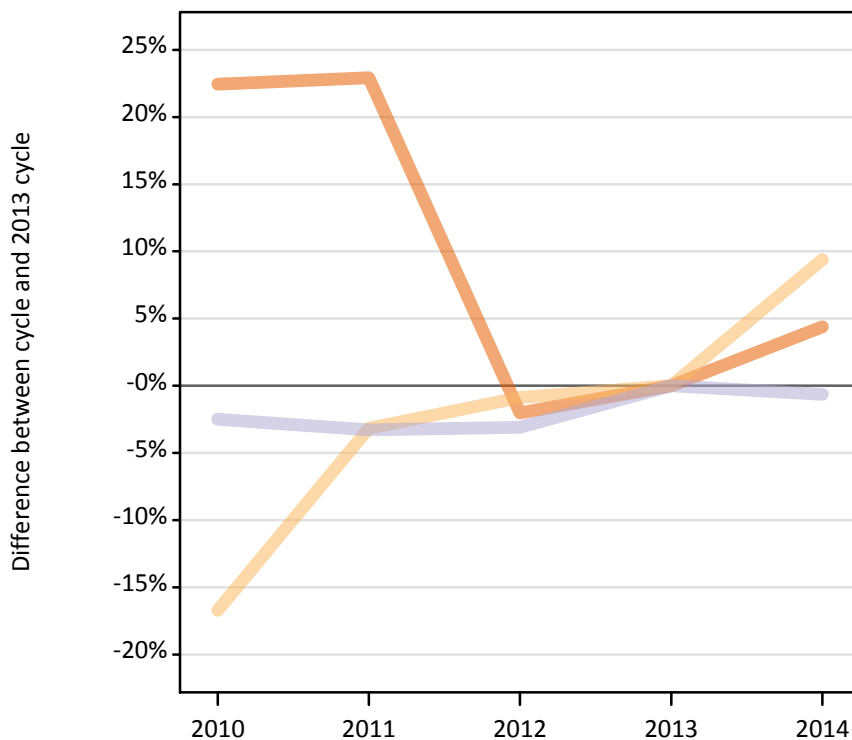
Difference between cycle and 2013 cycle

Domicile of applicant and tariff group of institution		2010	2011	2012	2013	2014
Northern Ireland	1. Lower tariff	-4%	6%	3%	0%	4%
	2. Medium tariff	-20%	-17%	-19%	0%	-2%
	3. Higher tariff	13%	16%	-5%	0%	-8%
	All	-7%	-1%	-7%	0%	-0%

D.5.37 Applications by domicile and tariff group of institution : Scotland

Difference between cycle and 2013 cycle

- 1. Lower tariff
- 2. Medium tariff
- 3. Higher tariff



D.5.38 Applications by domicile and tariff group of institution : Scotland

Domicile of applicant and tariff group of institution		2010	2011	2012	2013	2014
Scotland	1. Lower tariff	2,790	2,800	2,230	2,280	2,380
	2. Medium tariff	62,400	72,570	74,280	74,930	81,970
	3. Higher tariff	84,790	84,110	84,280	86,960	86,400
	All	149,980	159,480	160,790	164,170	170,750

D.5.39 Applications by domicile and tariff group of institution : Scotland

Difference between cycle and 2013 cycle

Domicile of applicant and tariff group of institution		2010	2011	2012	2013	2014
Scotland	1. Lower tariff	22%	23%	-2%	0%	4%
	2. Medium tariff	-17%	-3%	-1%	0%	9%
	3. Higher tariff	-2%	-3%	-3%	0%	-1%
	All	-9%	-3%	-2%	0%	4%

D.5.40 Applications by domicile and tariff group of institution : Wales

Difference between cycle and 2013 cycle

- 1. Lower tariff
- 2. Medium tariff
- 3. Higher tariff



D.5.41 Applications by domicile and tariff group of institution : Wales

Domicile of applicant and tariff group of institution		2010	2011	2012	2013	2014
Wales	1. Lower tariff	33,020	35,810	36,010	34,270	34,190
	2. Medium tariff	26,420	27,840	27,080	26,880	27,920
	3. Higher tariff	24,820	24,560	24,490	24,270	25,910
	All	84,270	88,210	87,580	85,420	88,020

D.5.42 Applications by domicile and tariff group of institution : Wales

Difference between cycle and 2013 cycle

Domicile of applicant and tariff group of institution		2010	2011	2012	2013	2014
Wales	1. Lower tariff	-4%	4%	5%	0%	-0%
	2. Medium tariff	-2%	4%	1%	0%	4%
	3. Higher tariff	2%	1%	1%	0%	7%
	All	-1%	3%	3%	0%	3%

D.5.43 Applications by domicile and tariff group of institution : EU (excluding UK)

Difference between cycle and 2013 cycle

- 1. Lower tariff
- 2. Medium tariff
- 3. Higher tariff



D.5.44 Applications by domicile and tariff group of institution : EU (excluding UK)

Domicile of applicant and tariff group of institution		2010	2011	2012	2013	2014
EU (excluding UK)	1. Lower tariff	36,800	43,170	34,740	36,290	38,610
	2. Medium tariff	44,320	51,280	43,930	46,450	49,180
	3. Higher tariff	76,050	82,850	79,220	83,880	88,770
	All	157,170	177,300	157,890	166,620	176,560

D.5.45 Applications by domicile and tariff group of institution : EU (excluding UK)

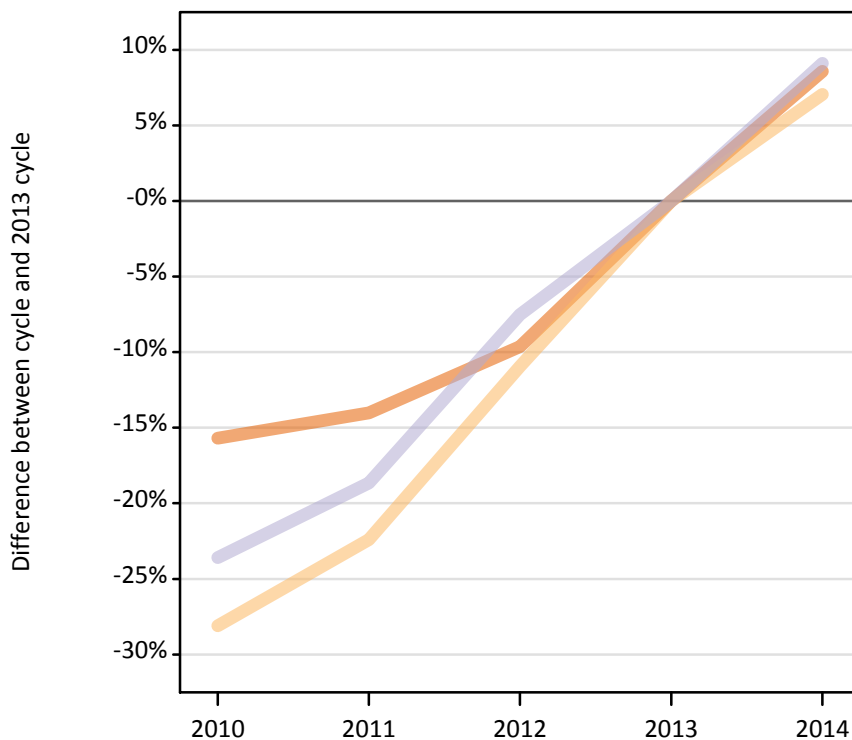
Difference between cycle and 2013 cycle

Domicile of applicant and tariff group of institution		2010	2011	2012	2013	2014
EU (excluding UK)	1. Lower tariff	1%	19%	-4%	0%	6%
	2. Medium tariff	-5%	10%	-5%	0%	6%
	3. Higher tariff	-9%	-1%	-6%	0%	6%
	All	-6%	6%	-5%	0%	6%

D.5.46 Applications by domicile and tariff group of institution : Not EU

Difference between cycle and 2013 cycle

- 1. Lower tariff
- 2. Medium tariff
- 3. Higher tariff



D.5.47 Applications by domicile and tariff group of institution : Not EU

Domicile of applicant and tariff group of institution		2010	2011	2012	2013	2014
Not EU	1. Lower tariff	19,800	20,190	21,220	23,480	25,490
	2. Medium tariff	36,690	39,600	45,450	51,030	54,640
	3. Higher tariff	100,770	107,290	121,950	131,880	143,880
	All	157,260	167,070	188,620	206,390	224,010

D.5.48 Applications by domicile and tariff group of institution : Not EU

Difference between cycle and 2013 cycle

Domicile of applicant and tariff group of institution		2010	2011	2012	2013	2014
Not EU	1. Lower tariff	-16%	-14%	-10%	0%	9%
	2. Medium tariff	-28%	-22%	-11%	0%	7%
	3. Higher tariff	-24%	-19%	-8%	0%	9%
	All	-24%	-19%	-9%	0%	9%

D.5.49 Technical notes and definitions

Applicants have been able to submit applications for all 2014 courses since early September.

Counts of the number of applicants reported have been rounded to the nearest 10 applicants, this may result in instances where totals do not equal the sum of the components. Proportional changes have been rounded to the nearest whole percentage point.

The Channel Islands and the Isle of Man are assigned as 'Not EU'. The previous January statistical release assigned the Channel Islands and Isle of Man in the 'UK' therefore the figures for earlier cycles may not match the previous January statistical release.

Age

This statistical release uses country-specific age definitions which align with the cut off points for school/college cohorts within the different administrations of the UK. For England and Wales ages are defined on the 31 August, for Northern Ireland on the 1 July and for Scotland on the 28 February the following year. Defining ages in this way matches the assignment of children to school cohorts. For applicants outside of the UK the cohort cut off for England and Wales has been used.

Applicant

A person who has made an application in the UCAS system during the cycle reported, this includes those who submit applications for deferred entry.

Application

An application to a course at an institution made by an applicant. Applicants may make up to five applications.

Country of institution

The UK country of the institution applied to.

Domicile

Declared area of permanent residence. The Channel Islands and the Isle of Man have been assigned as 'Not EU'.

First time applicant

An applicant that did not apply to the UCAS scheme in the previous cycle.

Reapplicant

An applicant that applied to the UCAS scheme in the previous cycle.

Subject group

The JACS3 classification used to classify courses into subject groups.

Tariff group of institution

Institutions are grouped as higher, medium or lower tariff based on their average levels of attainment of their accepted applicants (summarised through UCAS Tariff points) in recent cycles. Each group of institutions accounted for around a third of all UK 18 year old acceptances in recent cycles.