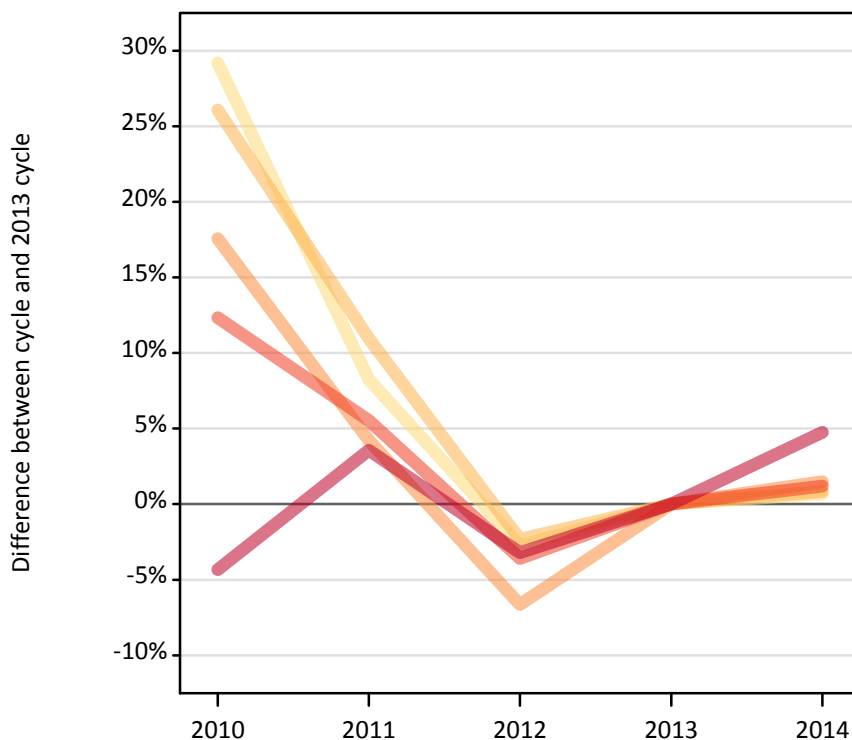
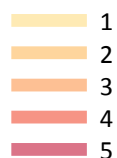


Applicants by number of applications at the 15 January deadline

D.4.1 Applicants by domicile and number of applications made : All domiciles

Difference between cycle and 2013 cycle



D.4.2 Applicants by domicile and number of applications made : All domiciles

Domicile and number of applications made by applicant		2010	2011	2012	2013	2014
All domiciles	1	53,680	44,970	40,410	41,550	41,830
	2	26,640	23,450	20,640	21,130	21,310
	3	35,210	31,210	27,960	29,950	30,390
	4	60,690	57,020	52,090	54,020	54,670
	5	394,300	426,880	398,930	412,170	431,810
	All	570,510	583,530	540,020	558,820	580,000

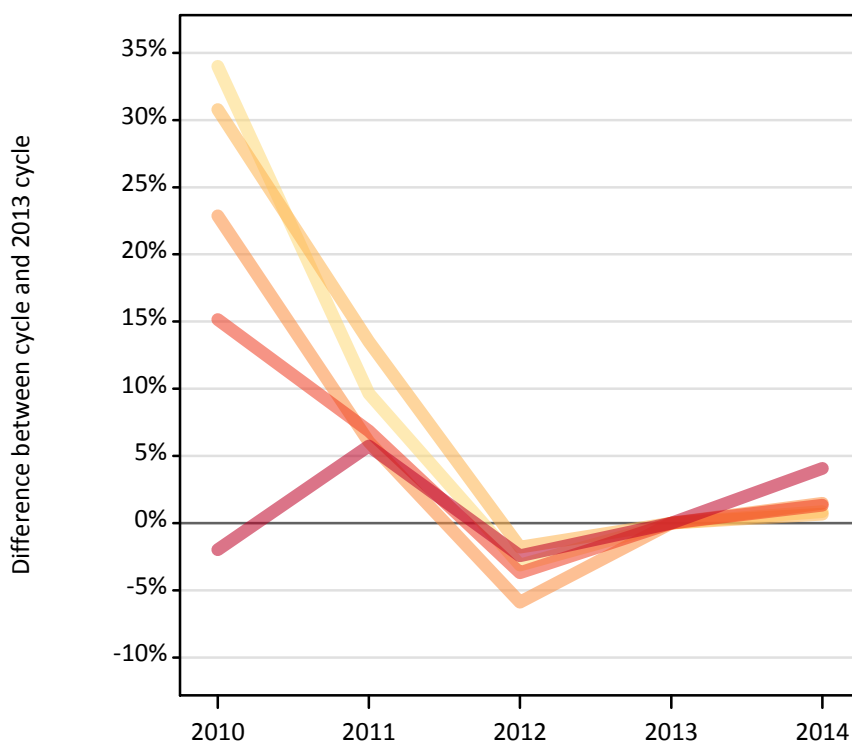
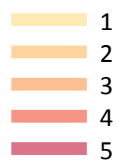
D.4.3 Applicants by domicile and number of applications made : All domiciles

Difference between cycle and 2013 cycle

Domicile and number of applications made by applicant		2010	2011	2012	2013	2014
All domiciles	1	29%	8%	-3%	0%	1%
	2	26%	11%	-2%	0%	1%
	3	18%	4%	-7%	0%	1%
	4	12%	6%	-4%	0%	1%
	5	-4%	4%	-3%	0%	5%
	All	2%	4%	-3%	0%	4%

D.4.4 Applicants by domicile and number of applications made : UK

Difference between cycle and 2013 cycle



D.4.5 Applicants by domicile and number of applications made : UK

Domicile and number of applications made by applicant		2010	2011	2012	2013	2014
UK	1	47,070	38,520	34,030	35,130	35,430
	2	23,930	20,770	17,970	18,300	18,420
	3	31,830	27,480	24,380	25,910	26,290
	4	53,850	49,960	45,040	46,760	47,380
	5	341,320	368,250	339,760	348,220	362,420
	All	498,000	504,980	461,180	474,310	489,940

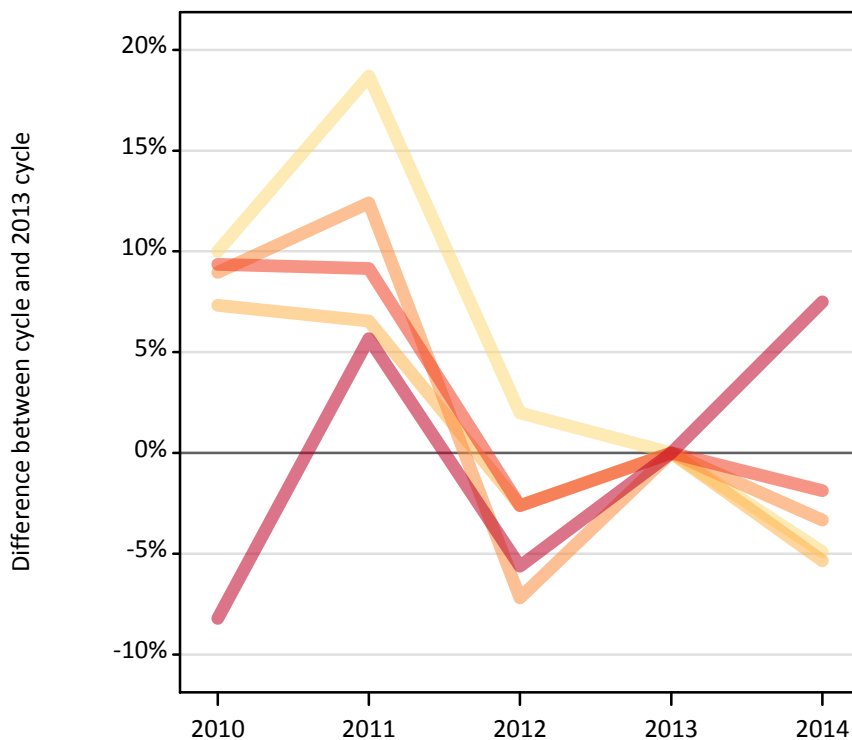
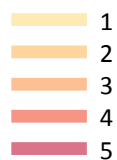
D.4.6 Applicants by domicile and number of applications made : UK

Difference between cycle and 2013 cycle

Domicile and number of applications made by applicant		2010	2011	2012	2013	2014
UK	1	34%	10%	-3%	0%	1%
	2	31%	14%	-2%	0%	1%
	3	23%	6%	-6%	0%	1%
	4	15%	7%	-4%	0%	1%
	5	-2%	6%	-2%	0%	4%
	All	5%	6%	-3%	0%	3%

D.4.7 Applicants by domicile and number of applications made : EU (excluding UK)

Difference between cycle and 2013 cycle



D.4.8 Applicants by domicile and number of applications made : EU (excluding UK)

Domicile and number of applications made by applicant		2010	2011	2012	2013	2014
EU (excluding UK)	1	3,380	3,650	3,140	3,080	2,930
	2	1,520	1,510	1,380	1,420	1,340
	3	1,860	1,920	1,590	1,710	1,650
	4	3,670	3,660	3,270	3,360	3,290
	5	26,090	30,040	26,830	28,430	30,560
	All	36,530	40,790	36,210	37,990	39,780

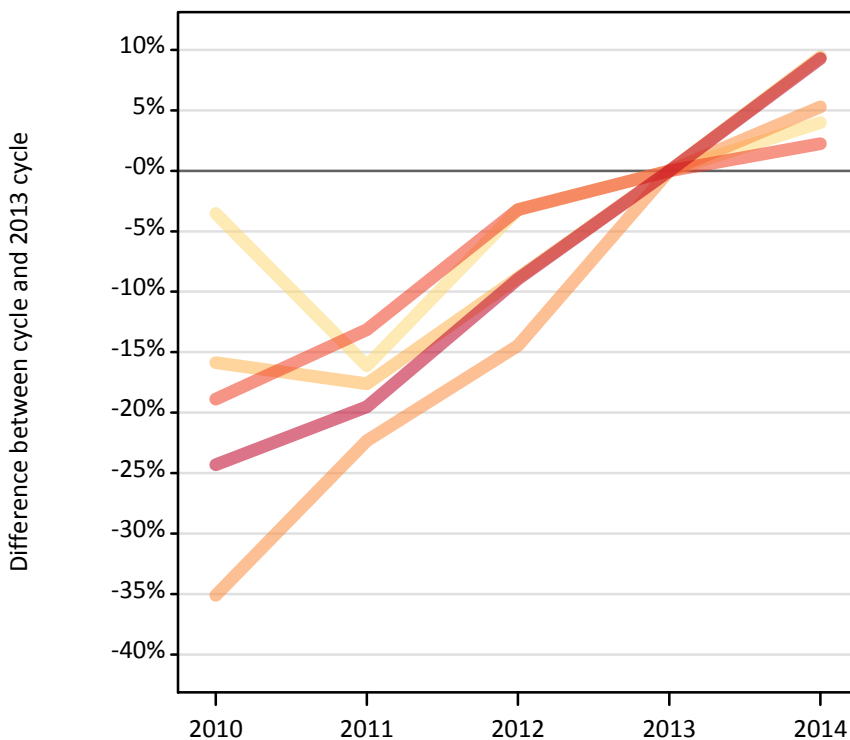
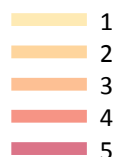
D.4.9 Applicants by domicile and number of applications made : EU (excluding UK)

Difference between cycle and 2013 cycle

Domicile and number of applications made by applicant		2010	2011	2012	2013	2014
EU (excluding UK)	1	10%	19%	2%	0%	-5%
	2	7%	7%	-3%	0%	-5%
	3	9%	12%	-7%	0%	-3%
	4	9%	9%	-3%	0%	-2%
	5	-8%	6%	-6%	0%	8%
	All	-4%	7%	-5%	0%	5%

D.4.10 Applicants by domicile and number of applications made : Not EU

Difference between cycle and 2013 cycle



D.4.11 Applicants by domicile and number of applications made : Not EU

Domicile and number of applications made by applicant		2010	2011	2012	2013	2014
Not EU	1	3,220	2,800	3,230	3,340	3,470
	2	1,190	1,160	1,290	1,410	1,550
	3	1,510	1,810	1,990	2,330	2,450
	4	3,170	3,390	3,780	3,910	4,000
	5	26,890	28,590	32,340	35,520	38,820
	All	35,980	37,760	42,640	46,510	50,290

D.4.12 Applicants by domicile and number of applications made : Not EU

Difference between cycle and 2013 cycle

Domicile and number of applications made by applicant		2010	2011	2012	2013	2014
Not EU	1	-4%	-16%	-3%	0%	4%
	2	-16%	-18%	-9%	0%	9%
	3	-35%	-22%	-14%	0%	5%
	4	-19%	-13%	-3%	0%	2%
	5	-24%	-20%	-9%	0%	9%
	All	-23%	-19%	-8%	0%	8%

D.4.13 Technical notes and definitions

Applicants have been able to submit applications for all 2014 courses since early September.

Counts of the number of applicants reported have been rounded to the nearest 10 applicants, this may result in instances where totals do not equal the sum of the components. Proportional changes have been rounded to the nearest whole percentage point.

The Channel Islands and the Isle of Man are assigned as 'Not EU'. The previous January statistical release assigned the Channel Islands and Isle of Man in the 'UK' therefore the figures for earlier cycles may not match the previous January statistical release.

Age

This statistical release uses country-specific age definitions which align with the cut off points for school/college cohorts within the different administrations of the UK. For England and Wales ages are defined on the 31 August, for Northern Ireland on the 1 July and for Scotland on the 28 February the following year. Defining ages in this way matches the assignment of children to school cohorts. For applicants outside of the UK the cohort cut off for England and Wales has been used.

Applicant

A person who has made an application in the UCAS system during the cycle reported, this includes those who submit applications for deferred entry.

Application

An application to a course at an institution made by an applicant. Applicants may make up to five applications.

Country of institution

The UK country of the institution applied to.

Domicile

Declared area of permanent residence. The Channel Islands and the Isle of Man have been assigned as 'Not EU'.

First time applicant

An applicant that did not apply to the UCAS scheme in the previous cycle.

Reapplicant

An applicant that applied to the UCAS scheme in the previous cycle.

Subject group

The JACS3 classification used to classify courses into subject groups.

Tariff group of institution

Institutions are grouped as higher, medium or lower tariff based on their average levels of attainment of their accepted applicants (summarised through UCAS Tariff points) in recent cycles. Each group of institutions accounted for around a third of all UK 18 year old acceptances in recent cycles.