

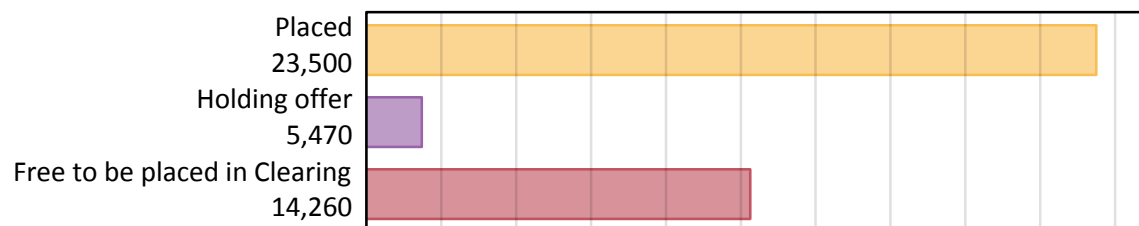
# Daily Clearing Analysis: Overview

## B7 Nursing analysis at 00:05 on Thursday 23 August 2018 (7 days after A level results day)

### AB.1 Placed applicants to nursing from all domiciles, 2018 cycle

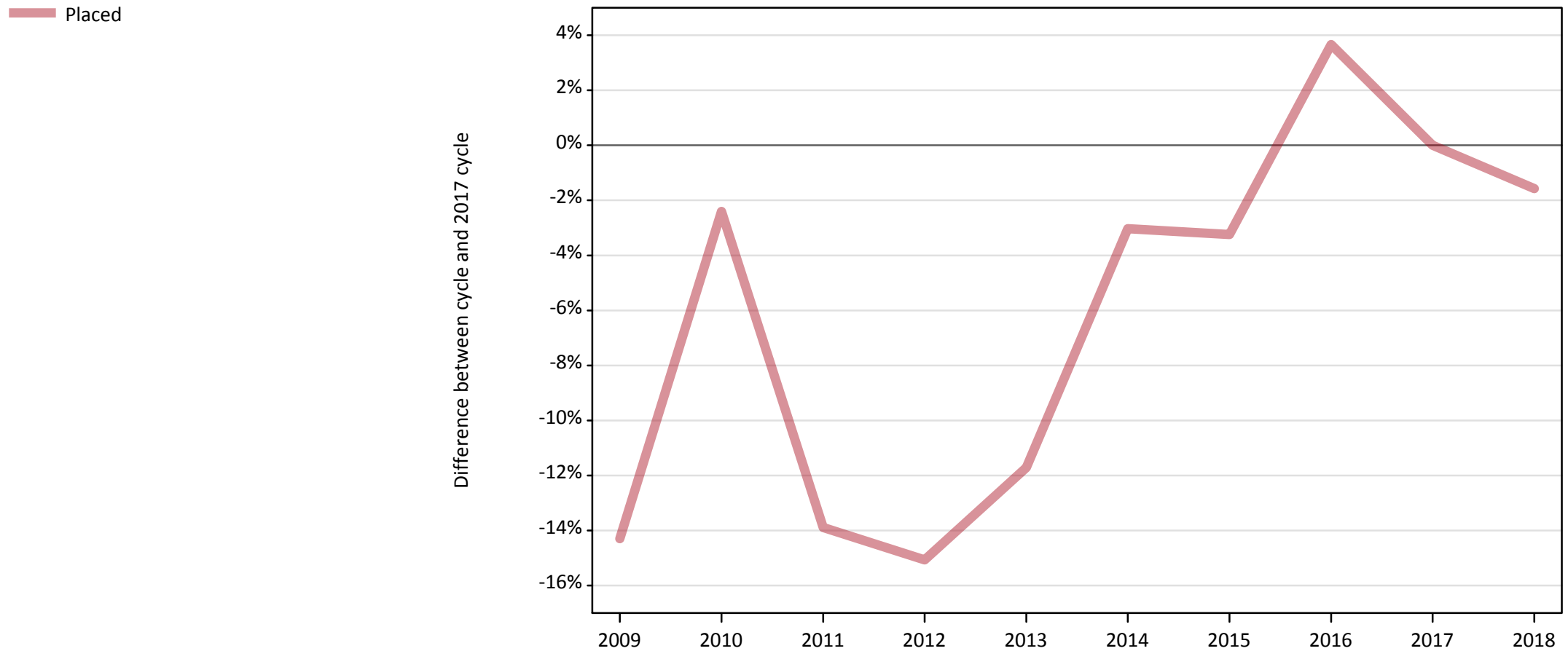
Applicant type	Status	2018
Main scheme	Placed (Clearing)	1,030
	Placed (Adjustment)	10
	Placed (Firm)	20,700
	Placed (Insurance)	460
	Placed (Other)	970
	Holding offer	5,470
	Free to be placed in Clearing	14,260
Direct to Clearing	Placed (Direct to Clearing)	330
	Other (Direct to Clearing)	460
All applicants	Placed	23,500

### AB.2 Summary of nursing applicants who are placed, holding offers or free to be placed in Clearing ( all domiciles )



### AB.3 Placed applicants to nursing from all domiciles: 7 days after A level results day

Placed applicants to nursing: difference between cycle and 2017 cycle



Note: The percentage change is not plotted in the above chart for groups with fewer than 30 placed applicants in any one cycle.

#### AB.4 Placed applicants to nursing from all domiciles: 7 days after A level results day

Placed applicants to nursing: applicants at 7 days after A level results day

Applicant type	Status	2009	2010	2011	2012	2013	2014	2015	2016	2017	2018
All applicants	Placed	20,460	23,300	20,560	20,280	21,080	23,150	23,100	24,750	23,880	23,500

#### AB.5 Placed applicants to nursing from all domiciles: 7 days after A level results day

Placed applicants to nursing: difference between cycle and 2017 cycle

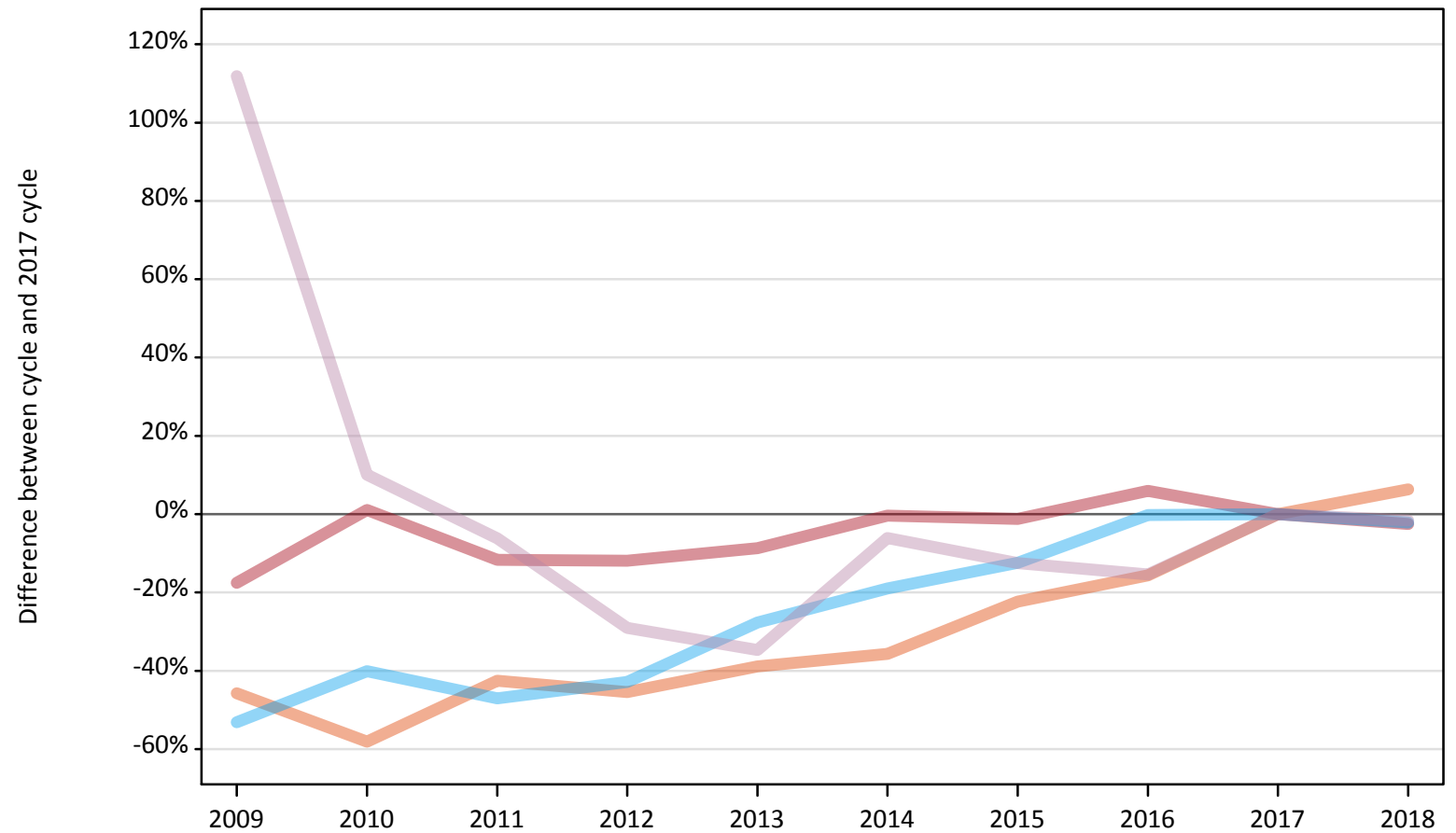
Applicant type	Status	2009	2010	2011	2012	2013	2014	2015	2016	2017	2018
All applicants	Placed	-14%	-2%	-14%	-15%	-12%	-3%	-3%	4%	0%	-2%

Note: The percentage change is not recorded in the above table for groups with fewer than 10 placed applicants in that cycle or in the 2017 cycle.

## AB.6 Placed main scheme applicants to nursing from all domiciles: 7 days after A level results day

All Main scheme placed routes (excluding Adjustment): difference between cycle and 2017 cycle

- Placed (Clearing)
- Placed (Firm)
- Placed (Insurance)
- Placed (Other)



Note: The percentage change is not plotted in the above chart for groups with fewer than 30 placed applicants in any one cycle.

**AB.7 Placed main scheme applicants to nursing from all domiciles: 7 days after A level results day**

All Main scheme placed routes (excluding Adjustment): applicants at 7 days after A level results day

Applicant type	Status	2009	2010	2011	2012	2013	2014	2015	2016	2017	2018
Main scheme	Placed (Clearing)	520	400	550	530	590	620	750	810	960	1,030
	Placed (Firm)	17,510	21,460	18,760	18,710	19,400	21,160	20,970	22,510	21,240	20,700
	Placed (Insurance)	220	280	250	270	340	380	420	470	470	460
	Placed (Other)	2,090	1,080	920	700	640	930	860	830	990	970

**AB.8 Placed main scheme applicants to nursing from all domiciles: 7 days after A level results day**

All Main scheme placed routes (excluding Adjustment): difference between cycle and 2017 cycle

Applicant type	Status	2009	2010	2011	2012	2013	2014	2015	2016	2017	2018
Main scheme	Placed (Clearing)	-46%	-58%	-43%	-45%	-39%	-36%	-22%	-16%	0%	6%
	Placed (Firm)	-18%	1%	-12%	-12%	-9%	-0%	-1%	6%	0%	-3%
	Placed (Insurance)	-53%	-40%	-47%	-43%	-28%	-19%	-12%	-0%	0%	-2%
	Placed (Other)	112%	10%	-6%	-29%	-35%	-6%	-12%	-15%	0%	-2%

Note: The percentage change is not recorded in the above table for groups with fewer than 10 placed applicants in that cycle or in the 2017 cycle.

**AB.9 Main scheme applicants placed to nursing through adjustment: 7 days after A level results day**

Placed through adjustment: difference between cycle and 2017 cycle

**[This chart is not part of this report]**

**AB.10 Main scheme applicants placed to nursing through adjustment: 7 days after A level results day**

Placed through adjustment: applicants at 7 days after A level results day

Applicant type	Status	2009	2010	2011	2012	2013	2014	2015	2016	2017	2018
Main scheme	Placed (Adjustment)	0	0	0	0	10	10	10	0	20	10

**AB.11 Main scheme applicants placed to nursing through adjustment: 7 days after A level results day**

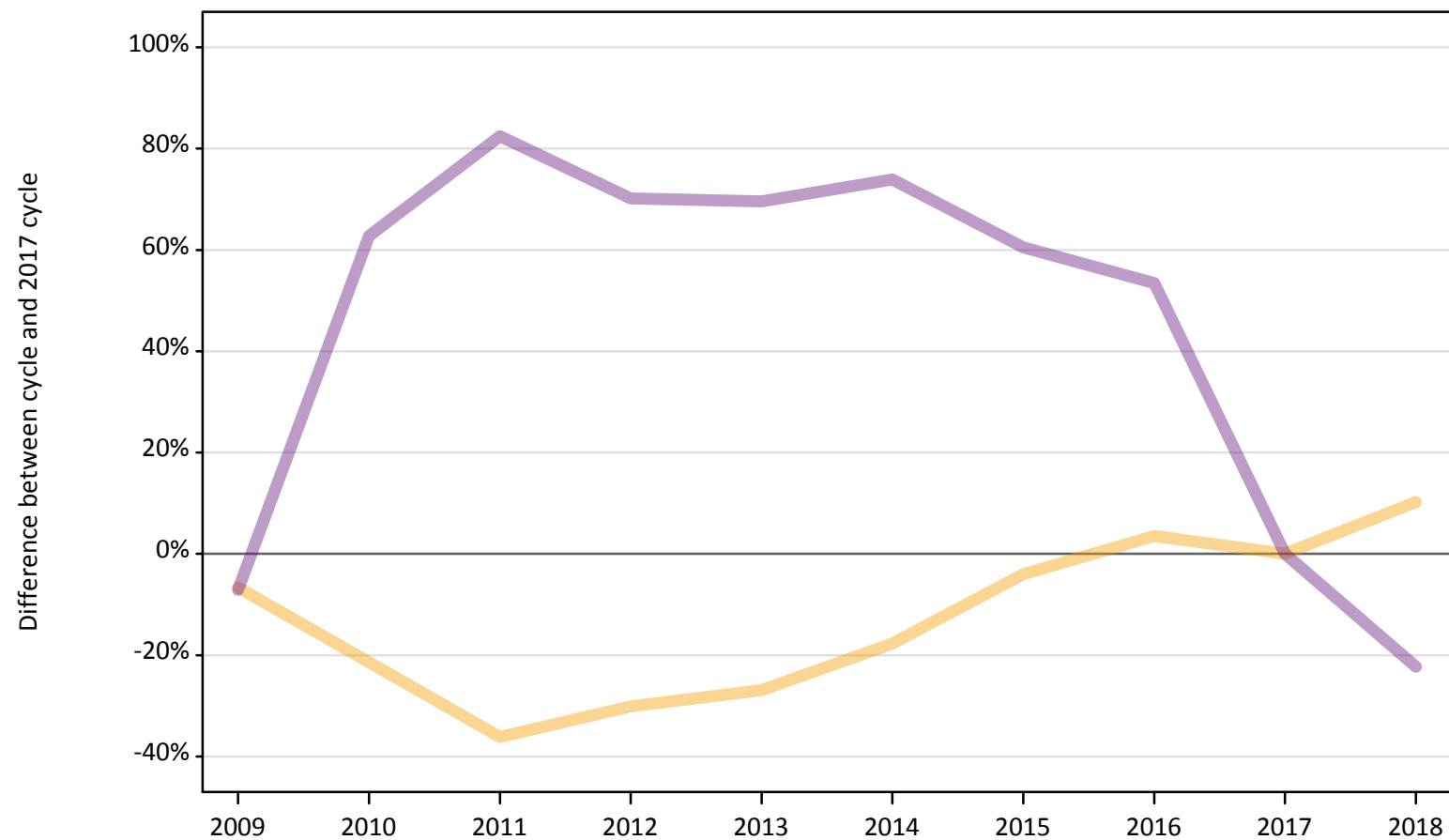
Placed through adjustment: difference between cycle and 2017 cycle

**[This table is not part of this report]**

## AB.12 Main scheme applicants to nursing not currently placed from all domiciles: 7 days after A level results day

Applicants in unplaced states: difference between cycle and 2017 cycle

— Holding offer  
— Free to be placed in Clearing



Note: The percentage change is not plotted in the above chart for groups with fewer than 30 unplaced applicants in any one cycle.

**AB.13 Main scheme applicants to nursing not currently placed from all domiciles: 7 days after A level results day**

Applicants in unplaced states: applicants at 7 days after A level results day

Applicant type	Status	2009	2010	2011	2012	2013	2014	2015	2016	2017	2018
Main scheme	Holding offer	4,640	3,910	3,170	3,470	3,630	4,090	4,760	5,140	4,960	5,470
	Free to be placed in Clearing	17,040	29,860	33,480	31,220	31,110	31,910	29,450	28,150	18,350	14,260

**AB.14 Main scheme applicants to nursing not currently placed from all domiciles: 7 days after A level results day**

Applicants in unplaced states: difference between cycle and 2017 cycle

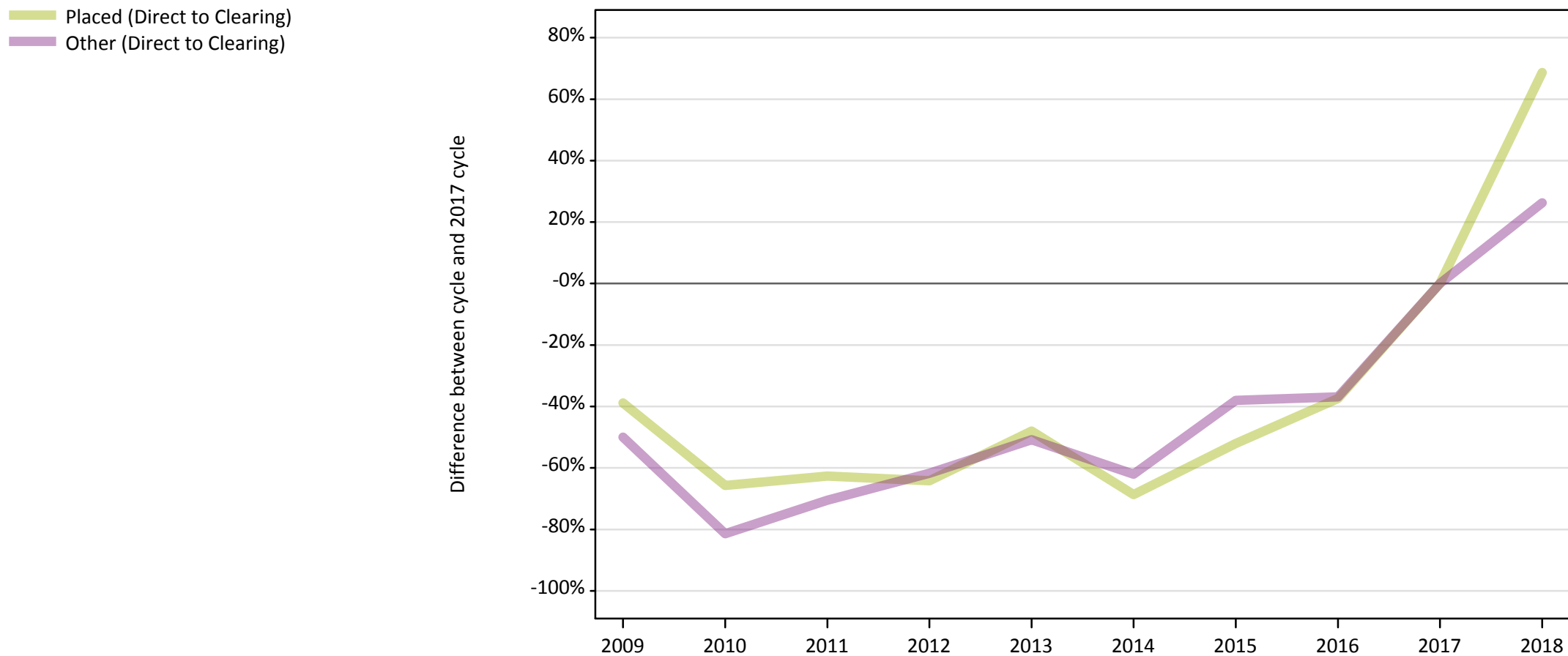
Applicant type	Status	2009	2010	2011	2012	2013	2014	2015	2016	2017	2018
Main scheme	Holding offer	-7%	-21%	-36%	-30%	-27%	-18%	-4%	4%	0%	10%
	Free to be placed in Clearing	-7%	63%	82%	70%	70%	74%	61%	53%	0%	-22%

Note: The percentage change is not recorded in the above table for groups with fewer than 10 unplaced applicants in that cycle or in the 2017 cycle.



## AB.15 Direct to Clearing applicants from all domiciles: 7 days after A level results day

Direct to Clearing: difference between cycle and 2017 cycle



Note: The percentage change is not plotted in the above chart for groups with fewer than 30 placed applicants in any one cycle.

**AB.16 Direct to Clearing applicants from all domiciles: 7 days after A level results day**

Direct to Clearing 7 days after A level results day

Applicant type	Status	2009	2010	2011	2012	2013	2014	2015	2016	2017	2018
Direct to Clearing	Placed (Direct to Clearing)	120	70	70	70	100	60	100	120	200	330
	Other (Direct to Clearing)	180	70	110	140	180	140	230	230	370	460

**AB.17 Direct to Clearing applicants from all domiciles: 7 days after A level results day**

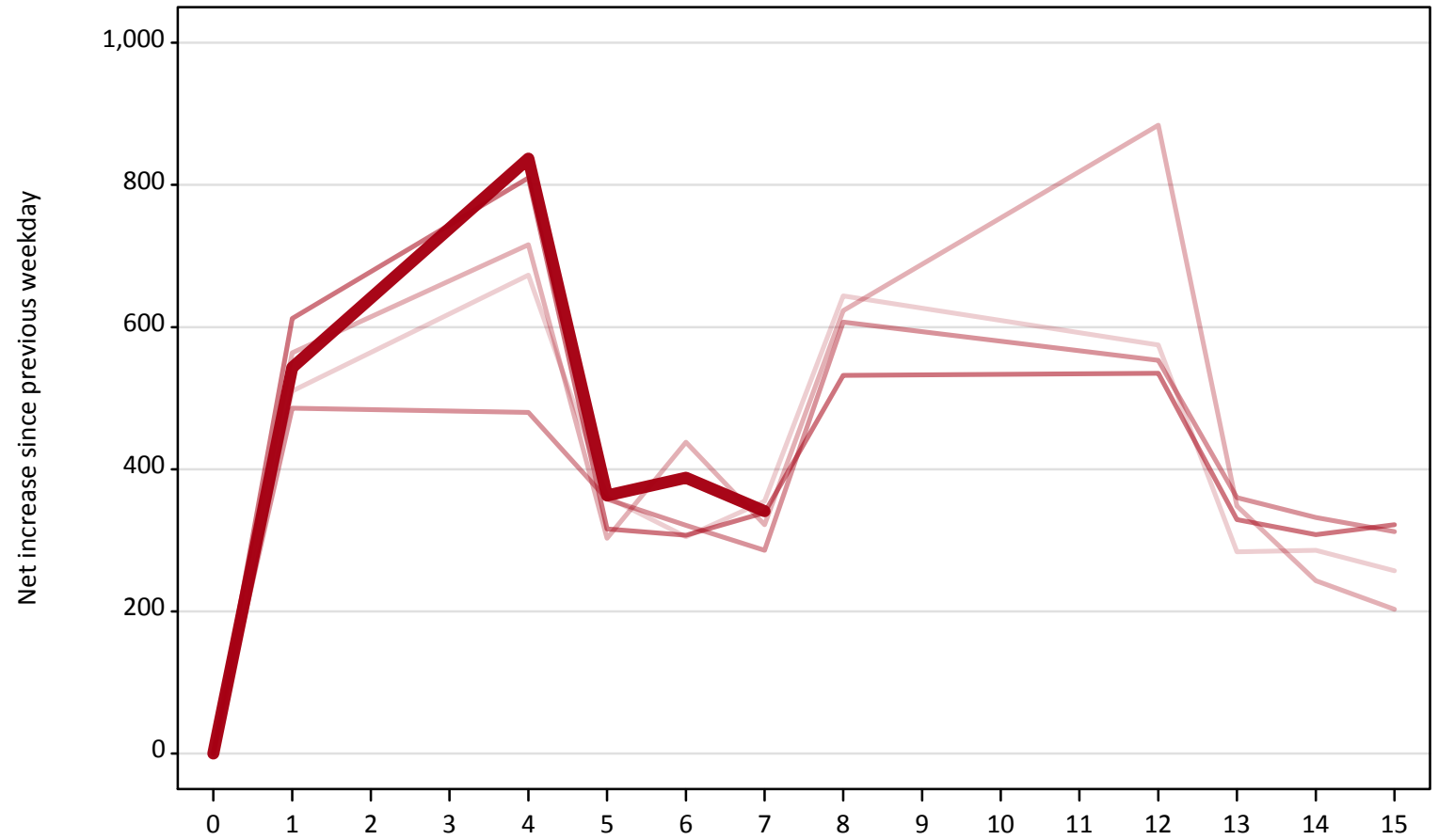
Direct to Clearing: difference between cycle and 2017 cycle

Applicant type	Status	2009	2010	2011	2012	2013	2014	2015	2016	2017	2018
Direct to Clearing	Placed (Direct to Clearing)	-39%	-66%	-63%	-64%	-48%	-69%	-52%	-37%	0%	69%
	Other (Direct to Clearing)	-50%	-81%	-70%	-62%	-51%	-62%	-38%	-37%	0%	26%

Note: The percentage change is not recorded in the above table for groups with fewer than 10 placed applicants in that cycle or in the 2017 cycle.

**AB.18 All Placed: Daily net change (from all domiciles)**  
Net increase since previous weekday (2018 cycle up to 7 days after A level results day)

- 2014
- 2015
- 2016
- 2017
- 2018**

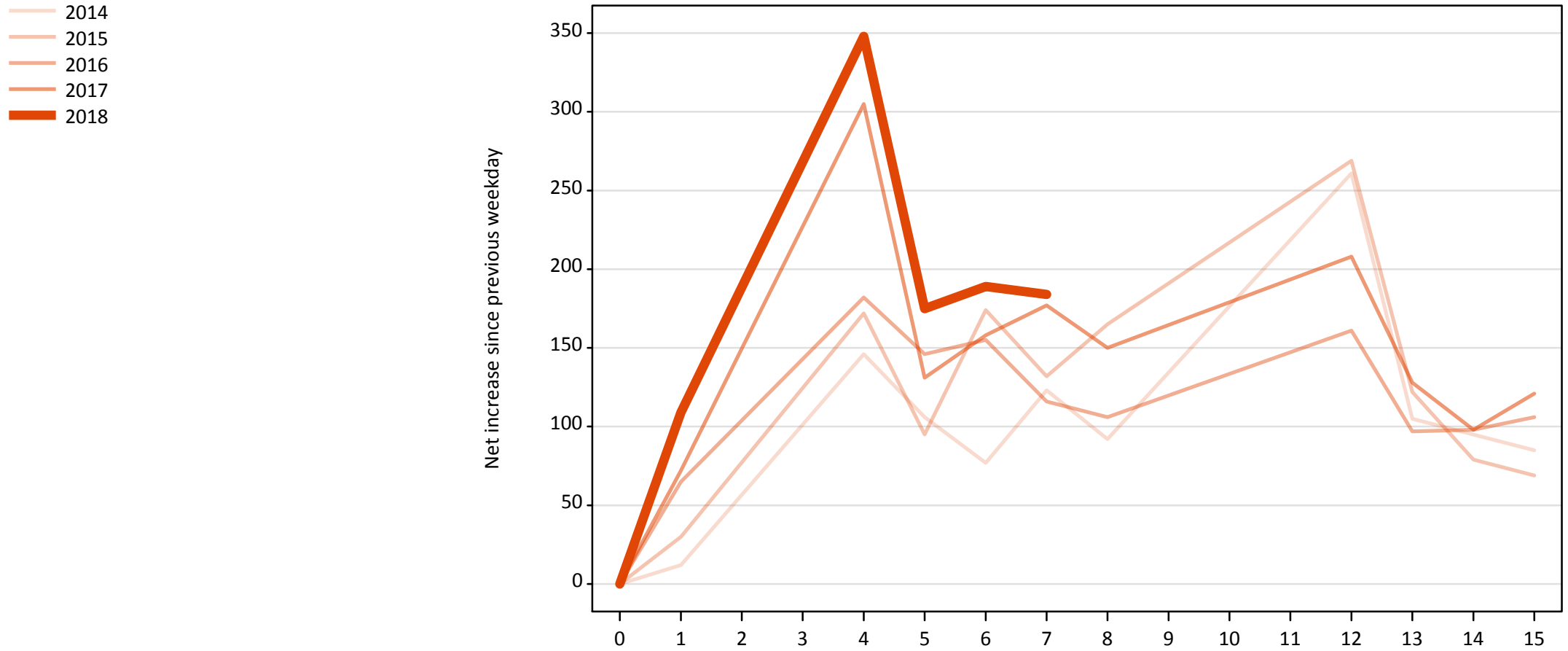


**AB.19 All Placed: Daily net change (from all domiciles)**

Net increase since previous weekday (2018 cycle up to 7 days after A level results day)

Applicant status, days since A level results day		2014	2015	2016	2017	2018
All Placed	0	0	0	0	0	0
	1	510	560	490	610	540
	4	670	720	480	810	840
	5	360	300	360	320	360
	6	310	440	320	310	390
	7	360	320	290	340	340
	8	640	620	610	530	
	12	580	880	550	540	
	13	280	350	360	330	
	14	290	240	330	310	
	15	260	200	310	320	

**AB.20 Placed through Clearing only: Daily net change (from all domiciles)**  
Net increase since previous weekday (2018 cycle up to 7 days after A level results day)



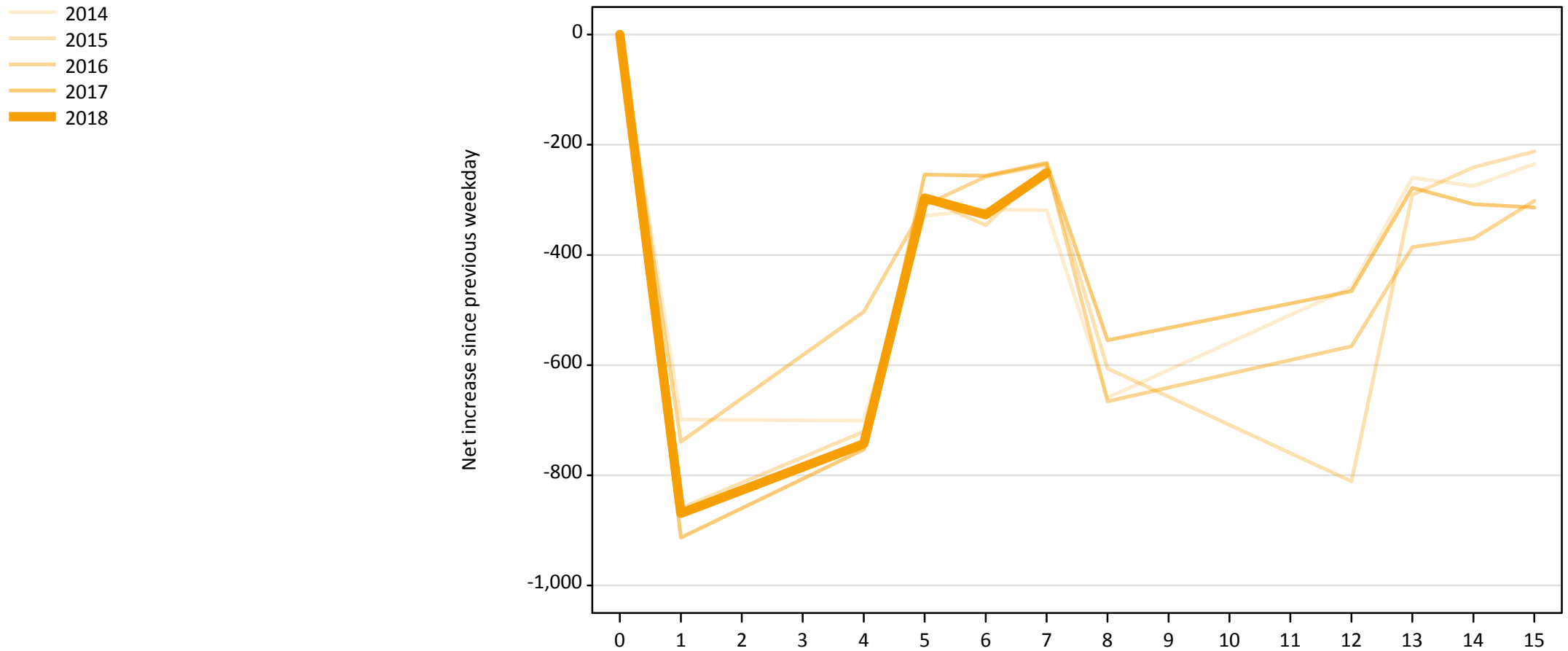
**AB.21 Placed through Clearing only: Daily net change (from all domiciles)**

Net increase since previous weekday (2018 cycle up to 7 days after A level results day)

Applicant status, days since A level results day		2014	2015	2016	2017	2018
Placed through Clearing only	0	0	0	0	0	0
	1	10	30	70	70	110
	4	150	170	180	310	350
	5	110	100	150	130	180
	6	80	170	160	160	190
	7	120	130	120	180	180
	8	90	170	110	150	
	12	260	270	160	210	
	13	110	120	100	130	
	14	100	80	100	100	
	15	90	70	110	120	

## AB.22 Holding Offer: Daily net change (from all domiciles)

Net increase since previous weekday (2018 cycle up to 7 days after A level results day)



**AB.23 Holding Offer: Daily net change (from all domiciles)**

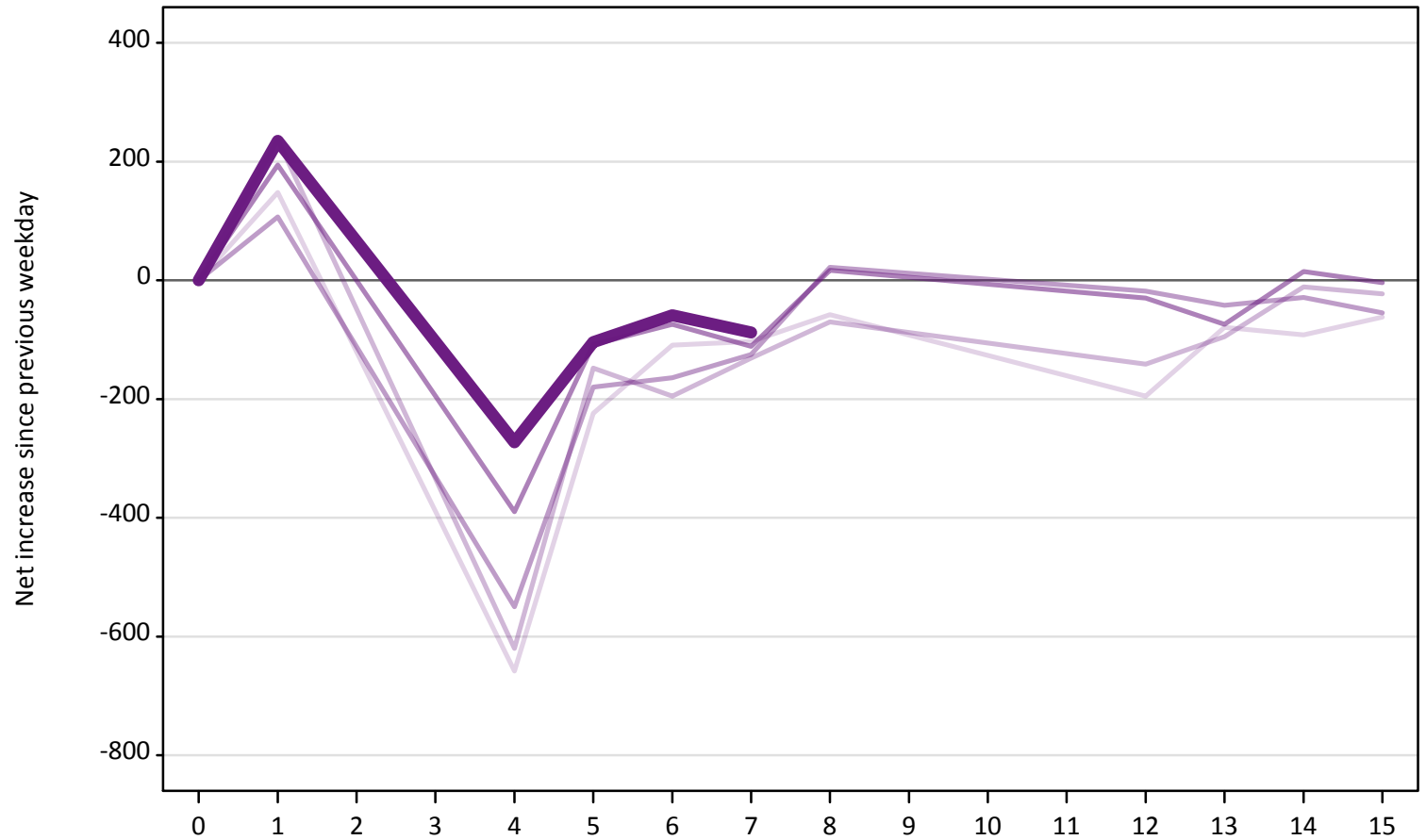
Net increase since previous weekday (2018 cycle up to 7 days after A level results day)

Applicant status, days since A level results day		2014	2015	2016	2017	2018
Holding Offer	0	0	0	0	0	0
	1	-700	-860	-740	-910	-870
	4	-700	-720	-500	-750	-740
	5	-330	-300	-310	-250	-300
	6	-320	-350	-260	-260	-330
	7	-320	-240	-240	-230	-250
	8	-660	-610	-670	-560	
	12	-460	-810	-570	-470	
	13	-260	-290	-390	-280	
	14	-280	-240	-370	-310	
	15	-240	-210	-300	-310	



**AB.24 Free to be placed in Clearing: Daily net change (from all domiciles)**  
Net increase since previous weekday (2018 cycle up to 7 days after A level results day)

- 2014
- 2015
- 2016
- 2017
- 2018



**AB.25 Free to be placed in Clearing: Daily net change (from all domiciles)**  
 Net increase since previous weekday (2018 cycle up to 7 days after A level results day)

Applicant status, days since A level results day		2014	2015	2016	2017	2018
Free to be placed in Clearing	0	0	0	0	0	0
	1	150	240	110	190	240
	4	-660	-620	-550	-390	-270
	5	-220	-150	-180	-110	-100
	6	-110	-200	-160	-70	-60
	7	-100	-130	-130	-110	-90
	8	-60	-70	20	20	
	12	-200	-140	-20	-30	
	13	-80	-100	-40	-70	
	14	-90	-10	-30	20	
	15	-60	-20	-60	0	